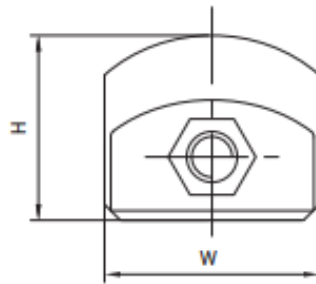


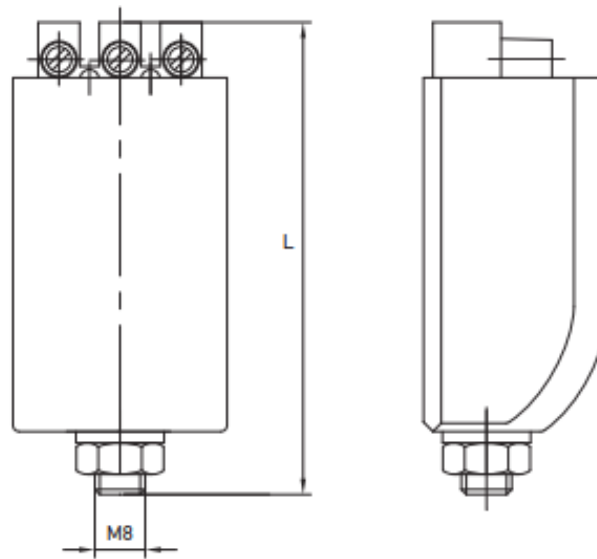
ELECTRONIC SUPERIMPOSED PULSE IGNITORS 220-240V, 50-60HZ

Type	Reference N°	Art N°	Sodium vapour lamps	Metal halide lamps	Peak value of ignition voltage kV	Max. lamp current A	Impulse position °el	Max. loading capacitance pF	Pulse cycle	Losses W	Tc °C	Operating Temperature range °C	Weight g	Dimensions mm	Screw terminals mm ²
ZX 70***	78.02.070.0	91078070	50 - 70 W	35 - 70 W	1,8 - 2,4	2	60-90/240-270	20 - 100	≥ 6	≤ 1	105	-30 ÷ 70	110	75x34x30	2,5
ZX	78.02.400.0	91078400	70* - 400 W	35-400 W	3 - 5	4,5	60-90/240-270	20 - 100	≥ 6	≤ 3	105	-30 ÷ 70	110	75x34x30	2,5
ZX 1000	78.02.010.0	91078010	600 - 1000 W	600-1000 W	3,5 - 5	10,3	60-90/240-270	20 - 100	≥ 4	≤ 8	105	-30 ÷ 65	230	95x43x35	6

*** for metal halide and high pressure sodium lamps with ignition voltage ≤ 2,4 kVp only
 *HS 70W (3,0 - 5,0 kVp) only



Diagrams



Wiring diagrams

